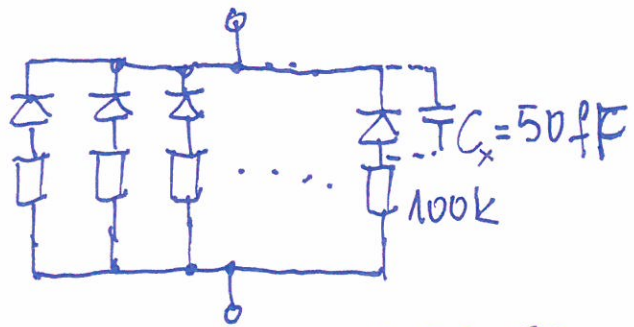
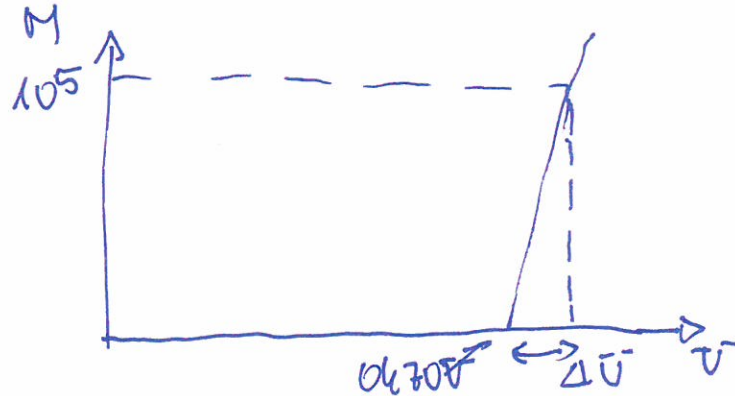


Stopień wejściowy układu do testowania detektorów MPPC (GaIPM)



$1,3 \times 1,3 \text{ mm}$, 676 pixeli $50 \times 50 \mu\text{m}$



$$\Delta U \approx 1,5 \text{ V}$$

$$Q = \Delta U \cdot C_x = 1,5 \cdot 50 \text{ fF} = 75 \text{ fC}$$

$$M = Q/q = \frac{75 \cdot 10^{-15}}{1,6 \cdot 10^{-19}} = 4,7 \cdot 10^5$$

